

CURVE DATA

C	Δ	D	R	T	L
1	10-00-00	5.01300	1143.028	100.000	199.481
2	30-00-00	15.35300	373.217	100.000	195.439
3	6-45-50	3.69098	1552.432	91.728	183.230
4	6-45-50	3.83937	1492.432	88.183	176.148
5	32-08-30	16.25672	352.469	101.543	197.709
6	32-08-30	19.59179	292.469	84.257	164.053

ALL UNMARKED CURVES ARE 30.0' TANGENT.

DRAINAGE EASEMENT CALLS:

A	N 19-45-01 E	130.05
B	N 16-56-59 E	113.66
C	N 28-19-24 E	36.96
D	N 24-42-02 E	52.49
E	N 28-19-24 E	56.11
F	N 24-42-02 E	35.33
G	N 8-19-24 E	85.00
H	N 10-24-05 E	71.37
I	N 14-19-24 E	116.00
J	N 8-55-10 E	145.97
K	N 5-45-28 E	149.89
L	N 5-51-15 E	229.54
M	N 1-49-24 E	115.00
N	N 6-39-24 E	227.00
O	N 3-08-32 E	230.47
P	N 13-09-24 E	168.00
Q	N 5-59-54 W	183.84
R	N 24-37-33 E	176.77
S	N 33-03-05 W	141.88
T	N 24-02-02 W	129.15

BUILDING LINES

- 25' ON THE FRONT OF ALL LOTS.
- 20' ON THE REAR OF ALL LOTS.
- 10' ON THE STREET SIDE OF ALL CORNER LOTS.
- 5' ON THE SIDE (BETWEEN) OF ALL LOTS.

UTILITY & DRAINAGE EASEMENT

- 5' ON THE FRONT OF ALL LOTS.
- 10' ON THE REAR OF ALL LOTS.
- 5' ON THE STREET SIDE OF ALL CORNER LOTS.
- 5' ON THE SIDE OF ALL LOTS (10' TOTAL BETWEEN ALL LOTS), OTHERS AS SHOWN.

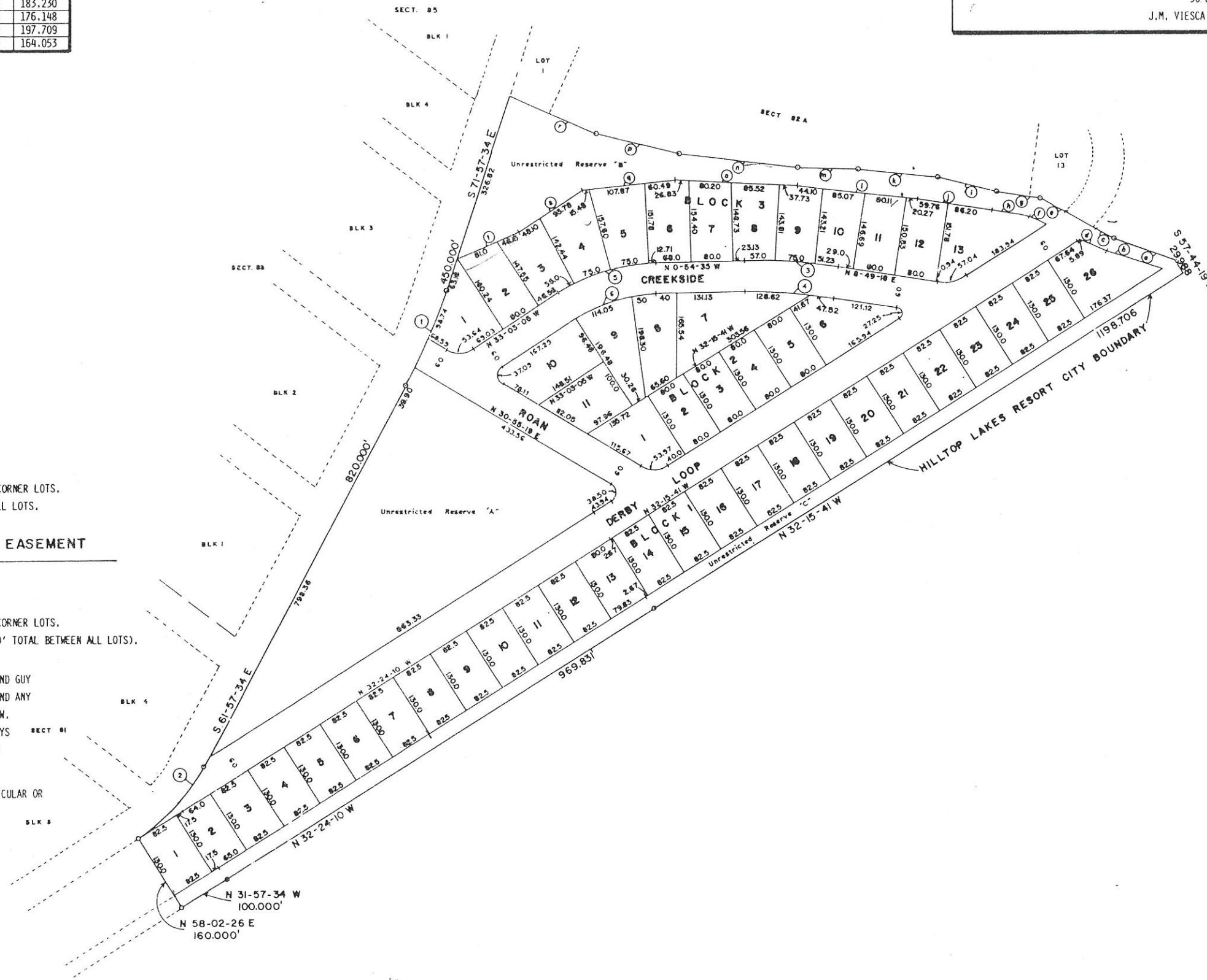
THERE IS A 5 FOOT WIDE ANCHOR AND GUY EASEMENT EXTENDING 20 FEET BEYOND ANY UTILITY EASEMENT OR PUBLIC R.O.W. WHERE AND WHEN NECESSARY FOR GUYS AND ANCHORS TO SUPPORT OVERHEAD UTILITY LINES.

ALL SIDE LOT LINES ARE PERPENDICULAR OR RADIAL TO STREET LINES.

HILLTOP LAKES RESORT CITY

SECTION 82

50 LOTS-26.497 ACRES
J.M. VIESCA GRANT, LEON COUNTY, TEXAS



HILLTOP LAKES RESORT CITY

SECTION 82

LEON COUNTY, TEXAS

E. E. JOHNSON & ASSOCIATES

ENGINEERS

CALDWELL

TEXAS

1" = 100'

DRAWN BY: C.E.S. Dwyer &

DESIGNED BY: