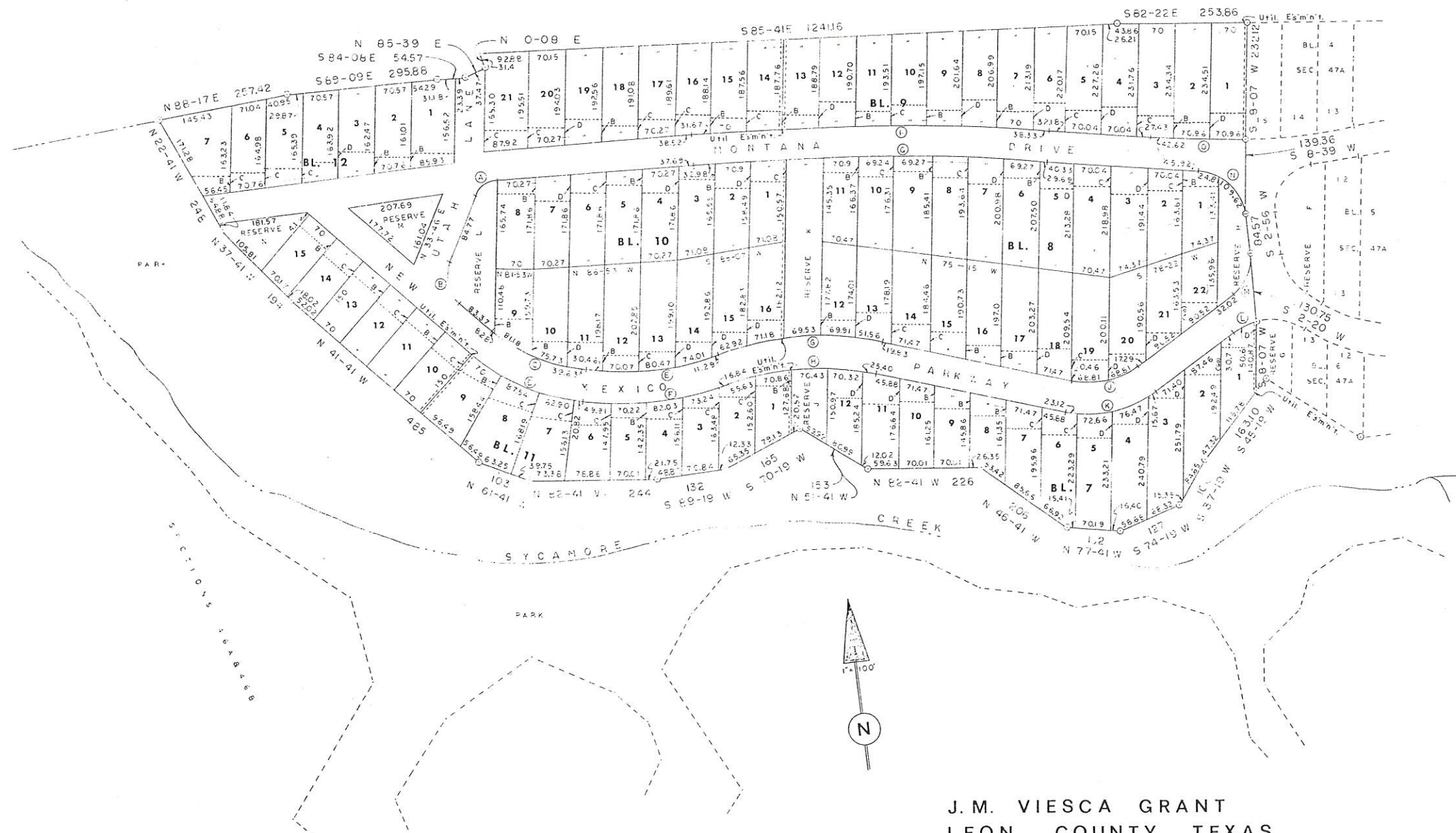


HILLTOP LAKES RESORT CITY

SECTION 47-B



J.M. VIESCA GRANT
LEON COUNTY, TEXAS
93 LOTS --- 35.608 ACRES

CURVE DATA

C	A	D	R	T	L
A	59'-21"	108.63333	52.644	30.0	54.52
B	75'-30"	88.73200	44.576	50.0	85.09
C	34'-48"	16.99076	33.7242	10.49	20.42
D	34'-48"	14.42445	39.7342	12.49	24.126
E	24'-46"	9.30015	61.019	12.985	22.433
F	24'-46"	8.47423	67.8112	14.218	29.124
G	31'-0"	9.53560	60.0916	16.664	22.510
H	31'-0"	10.59333	54.0906	15.00	27.264
I	45'-25"	35.21819	16.2170	73.23	127.62
K	45'-25"	25.79100	22.1170	100.0	187.92
L	69'-02"	46.55718	123.074	84.84	148.28
M	58'-21"	63.98200	89.55643	50.0	91.20
N	52'-49"	63.16500	90.71479	80.0	131.11
O	12'-00"	3.01000	190.1022	21.00	396.54
P	7'-00"	1.00000	573.000	35.40	700.00
Q	7'-00"	1.01058	5670.00	346.73	692.67

BUILDING LINES

25' ON THE REAR OF ALL LOTS.
10' " " STREET SIDE OF ALL CORNER LOTS.
5' " " SIDE (between) OF ALL LOTS.
FRONT BUILDING LINES ARE AS SHOWN BY SYMBOLS;
A = 20' THE DISTANCES ARE MEASURED FROM ONE
B = 30' FRONT PROPERTY CORNER ON EACH LOT
C = 40' AND IS DESIGNATED BY THE SYMBOLS AND
D = 50' FURTHER IDENTIFIED WITH AN ARROW(→).
THESE LINES ARE PERPENDICULAR TO THE
SIDE LOT LINES SO REFERENCED.

UTILITY EASEMENTS

10' ON THE REAR OF ALL LOTS.
5' " " FRONT " " " "
5' " " STREET SIDE OF ALL CORNER LOTS.
OTHERS AS SHOWN ARE 5' ON EACH LOT.
5' UTILITY GUY WIRE EASEMENT ON THE
SIDE (between) OF ALL LOTS.

DRAWN BY: *Ab. Johnson*
DESIGNED BY: *Ed. Johnson*

E.E. JOHNSON & ASSOCIATES
ENGINEERS
CALDWELL TEXAS